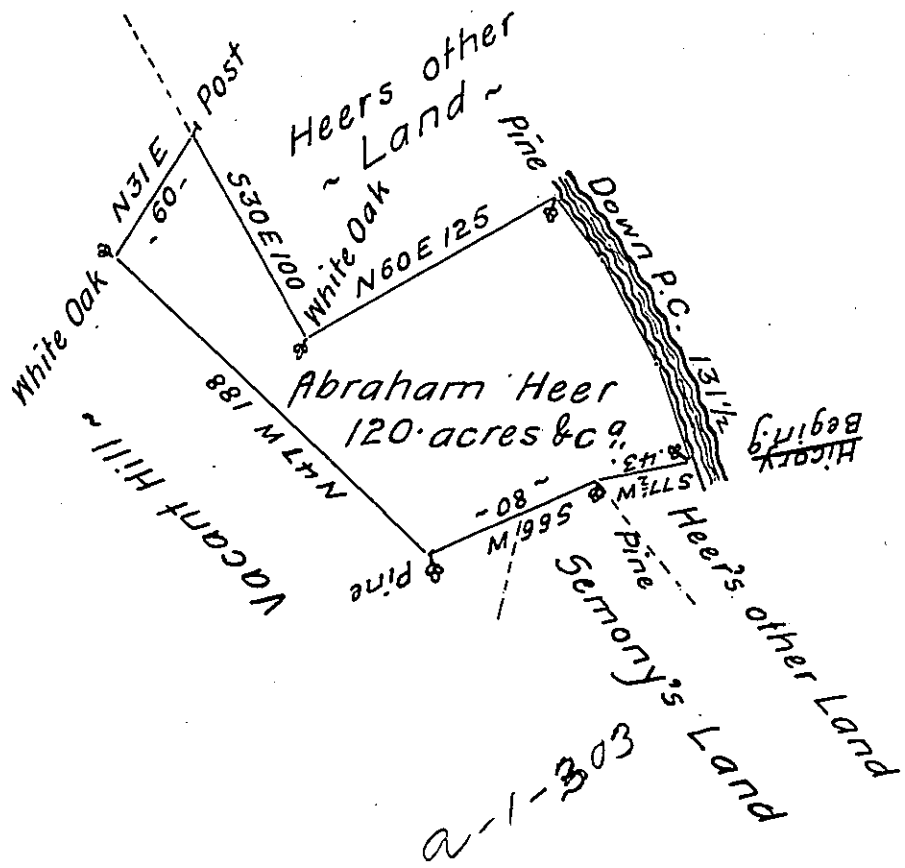


Courses and ~
Distance down
Penns' Creek.

S 41 E 32 ~
S 30 E 54 ~
S 20 E 45 1/2
131 1/2



The Draught of a Tract of Land called Manheim situate on
Penns Creek in the County of Cumberland containing One Hund-
red and Twenty Acres with the usual allowance of Six acres $\frac{1}{2}$
Cent: for Roads ~ resurvey'd the 26th day of May Anno Dom:
1767 agreable to the Lines of a former Survey made by John
Armstrong Esq^r. For Abraham Heer In Pursuance of a Warrant
from the Hon^{ble} Proprietaries bearing Date at Philadelphia the
10th day of Feb'y anno Dom: 1755. ~

To John Lukens Esq^r. S.G. } $\frac{1}{2}$ W^m Maclay D.S.
~ of Pennsylvania ~ }

IN TESTIMONY that the above is a copy of the original remaining on file in
the Department of Internal Affairs of Pennsylvania, made
conformably to an Act of Assembly approved the 16th day of
February, 1833, I have hereunto set my Hand and caused
the Seal of said Department to be affixed at Harrisburg,
this thirteenth day of March 1905

Isaac B. Brown
Secretary of Internal Affairs.